

## Sheltered Housing Developments

Chester and District Housing Trust have made a commitment to reduce accommodation with shared bathroom facilities by 2010. Four schemes have currently been identified as being no longer fit for purpose and are in various stages of the development process. The first new properties are due to be completion in Autumn 2010.

Theses schemes will be developed to: -

- be flagship schemes
- be designed to meet the changing needs of residents
- have better space standards
- be energy efficient to reduce fuel and water costs
- have on site parking
- have a high level of sustainable design and construction
- achieve Code for Sustainable Homes Level 3

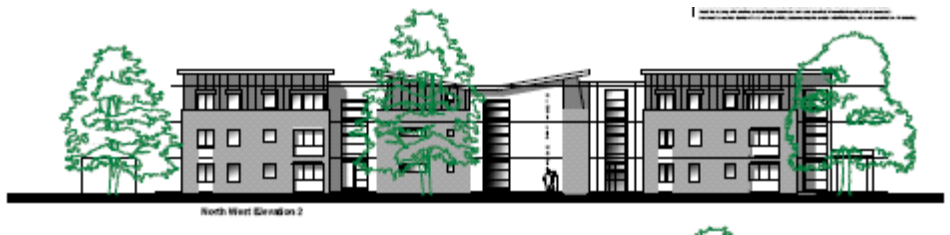
### Suffolk House, Chester



Development details

- Sheltered accommodation for the over 55's
- Available for rent
- 32 No, 2 bed apartments
- Anticipated completion date autumn 2010

### Kingslea House, Chester



Redevelopment proposals

- Sheltered Accommodation for the over 55
- Available for rent
- 27 No. 2 bed apartments
- 3 No 1 bed apartments
- 3 units to be wheelchair accessible
- Anticipated completion early 2011

### **Hoole House, Hoole**



#### **Development details**

- Sheltered accommodation for the over 55's
- Available for rent and shared ownership
- 36 No, 2 bed apartments
- Anticipated completion date early 2011

### **Wain House, Saughall**



#### Development details

- Sheltered accommodation for the over 55's
- Available for rent
- 28 No, 2 bed apartments
- 9 No. 1 bed apartments
- 5 ground floor flats with their own front doors
- Anticipated completion date early 2011

For further details please contact Danielle Harrison on 01244 305503

---

#### **Circular Drive, Lache**



Following the demolition of four terraced properties due to subsidence, Chester and District Housing in partnership with Cheshire West and Chester Council and Plus Harvest Group are currently building 2 no replacement semi detached houses. Each unit will provide 4 bedrooms and two of the properties will be wheelchair compliant at ground floor.

Construction is currently ongoing and properties will be available for rent through Chester and District Housing Trust in Spring 2010.

For further information please contact Holly Stiles on 01244 305503